

# Familias Representativas del Orden Plecoptera

## Perlidae



Head with variable color patterns

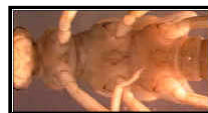


Finely branched gills only on sides of thoracic segments, never extending to abdominal segments

## Perlodidae



Tails equal in length or longer than abdomen

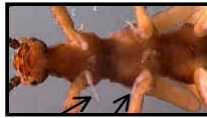


No branching gills behind base of legs

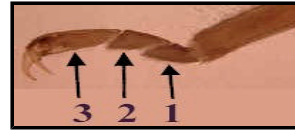
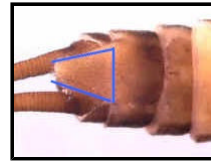


Metathoracic wingpads strongly diverging from body

## Taeniopterygidae



With single gill at base of each leg or with triangular plate underneath next to last segment of abdomen



Tarsal segments 1 and 2 about same length

## Nemouridae



Extended hind legs reaching approximately to end of abdomen



Tarsal segment 2 much shorter than 1