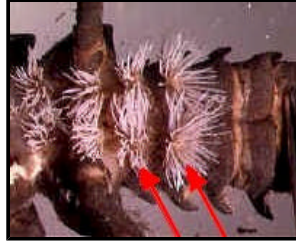


# Familias Representativas del Orden Plecoptera

## Pteronarcyidae



Body black



Some branching gills on ventral abdominal segments

## Peltoperlidae



Thorax with large dorsal plates



Thoracic sternal plates shield like, overlapping succeeding segment

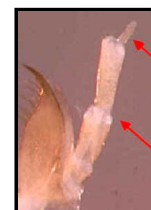
## Chloroperlidae



Nota usually without pigmented pattern. Tails 3/4 or less than length of abdomen. Abdominal terga widest posteriorly.



Glossa, Paraglossa, Maxillary palp



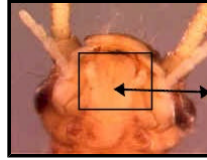
Maxillary palpal segment small and not in line

with the segment it is

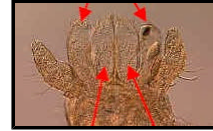
## Capniidae



Abdominal terga widest posteriorly.



Head



Paraglossa  
and  
glossa  
about  
equal  
in  
length.

(This family is very difficult to separate from the family Leuctridae)

## Leuctridae



Abdominal segments essentially  
parallel-sided

Diseño: **Nelson Chaves** Biología - UT-Colombia