

Familias Representativas del Orden Trichoptera

Philopotamidae



Pronotum with posterior black band

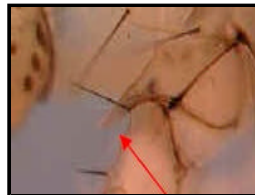


Labrum soft and T-shaped

Polycentropodidae

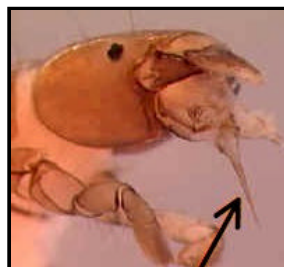
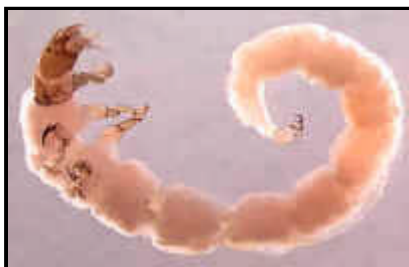


Note- trochantin



Pointed fore trochantin

Dipseudopsidae

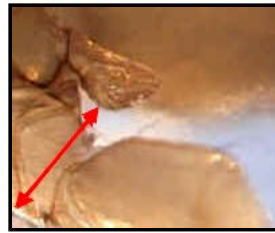


Tip of labium very long

Psychomyiidae



Note- trochantin is located where the base of the first leg attaches to the body



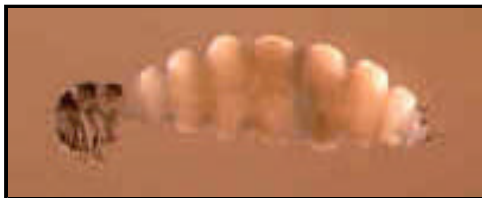
Broad hatchet-shaped trochantin

Hydropsychidae



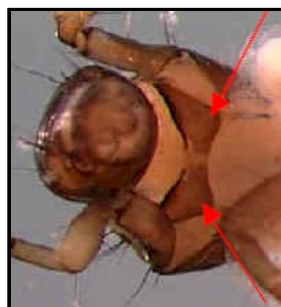
Abdomen with rows of highly branched gills

Hydroptilidae



Members of this family are never longer than 6.5mm and gills are inconspicuous

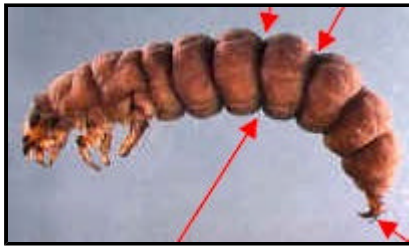
Glossosomatidae



Prosternal sclerotized plates

large. thoracic segment

Rhyacophilidae



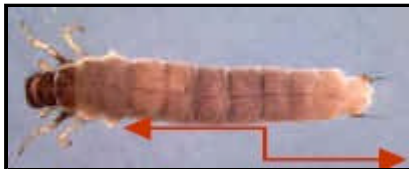
Body thick with deep constrictions between segments with large posterior claws

Odontoceridae



With dorsal hump and no lateral humps on first abdominal segment.
Gills

Lepidostomatidae



With lateral humps on either side of first abdominal segment

Brachycentridae

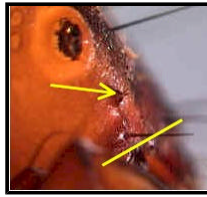
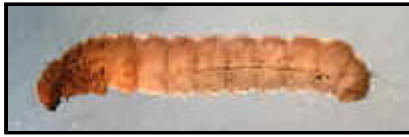


Larvae lack dorsal or lateral humps

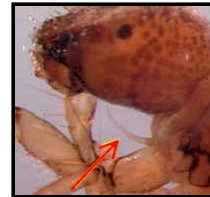


Larvae often found in cases similar to these

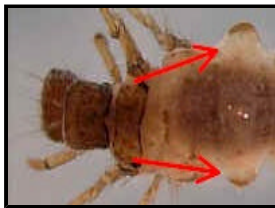
Limnephilidae



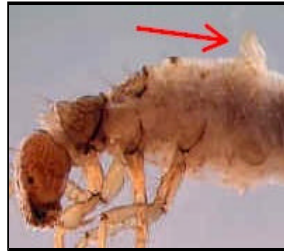
Antenna (small)
between eye.



Prosternal
horn
present



lateral humps



abdominal segment dorsal ,

Diseño: **Nelson Chaves** Biología - UT-Colombia